

Air Quality & GHG Mitigation Comm. (AMS10)

Summer Meeting Wrap Up

Doug Eisinger, Sonoma Technology, Chair

June 29, 2022



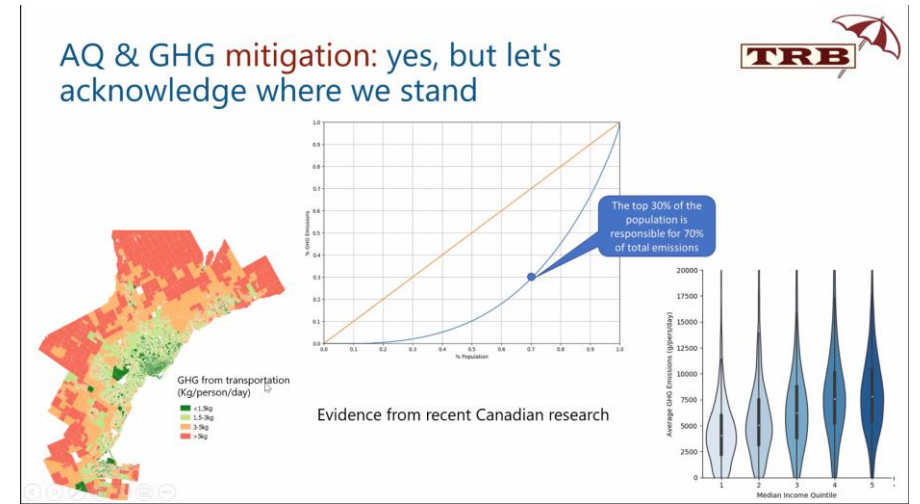
TRBAirQualityGHG.org



“It runs on its conventional gasoline-powered engine until it senses guilt, at which point it switches over to battery power.”

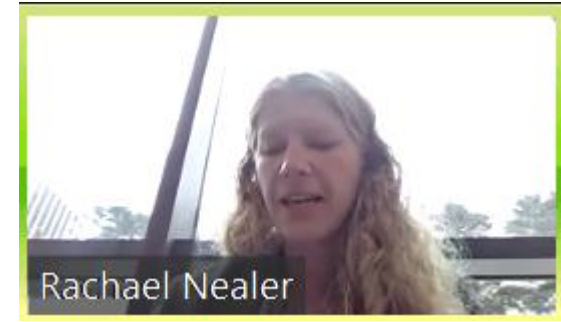
Some (but by no means all) key nuggets

- New Subcommittee's Introduction
 - Emphasis: connect research/policy
 - Work collaboratively with other TRB comm.'s
 - Equity is key, but the "how" is a challenge
- Research priorities
 - Focus: where to get GHG reductions (70% of emissions from 30% of population)
 - Need to integrate AQ & GHG mitigation



Some (but by no means all) key nuggets

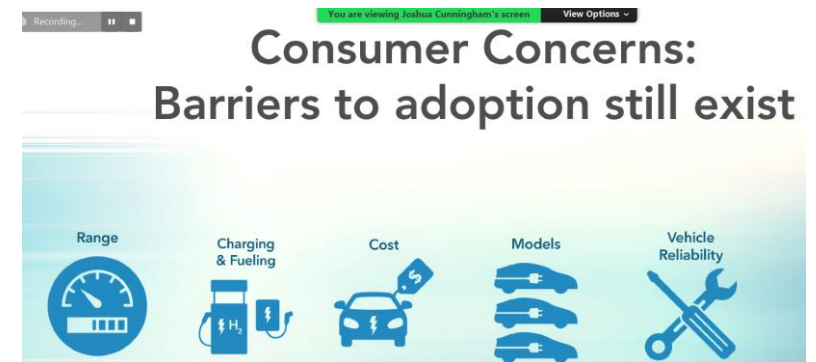
- Rachael Nealer: AMS40 (Alt. Fuels/Tech.)
 - Will be adding an equity lead
 - Call for papers: social/equity, decarb., EVs, transit electrification
 - 2024 Denver: joint mtg (AMS10/30/40)
- Rebecca Dodder: AMS30 (Energy)
 - Look at energy: supply mkts. to demand side
 - (AMS40 more infrastructure issues)
 - Energy security and links to climate security
 - Transition to EVs and how it's a win across all those topics
 - Efficiency: from mpg to miles per kW hour
 - Coordinate their work with AMS10: subcomm's on CC, CAVs
 - LCA work: GREET author is comm. member (Mike Wang)
 - "Just" energy transitions: equity, bring benefits to all communities



Some (but by no means all) key nuggets

Branch Chief: Advanced Clean Cars

- 100% new-vehicle sales: high-quality ZEVs
- 2026 (35%) to 2035 (100%) phase-in
- Cost parity projections (e.g., 2030 for MDVs)
- Equity/EJ credits: carshares, low MSRP, used EVs
- By 2050 though, ICE vehicles are 10% of fleet
- ACC-II emissions reductions: NO_x & GHG



Some (but by no means all) key nuggets

Steve Cliff, NHTSA Administrator:

- Can't address CC w/out dealing with vehicles; equity issue as well (one of President's top priorities)
- Across US, highways divide communities and create equity challenges
- ICE vehicles need to be efficient
- March 2022 NHTSA set new CAFÉ stds promulgated – 49 mpg by MY 2026 (fleet ave.)
- BIL: network of EV charging stations (Fed/St./Local/private sector partnership)
- **Policy-relevant research: adoption of vehicle electrification, and get consumers to accept new tech., esp. in rural areas**



Some (but by no means all) key nuggets

- Breakout Discussions
 - Need to sort through suggestions, prioritize, and select what/how to implement
 - Try to support clear definition of objectives and terms for topics like equity
 - Need to more effectively share info on what the committee is doing
 - **By August 1, share ideas w/Annalisa**

AMS10 2022 Summer Meeting Brainstorm

File Edit View Insert Format Data Tools Extensions Help Last edit was made seconds ago by Anonymous Blobfish

100% \$ % .0 .00 123 Default (Ari... 10 B I S A

33 fx 1. Define community or design a way to identify community needs. 2. Identify, summarize, compare frameworks for outreach and engagement v

	A	B	C
1		What can the Committee do to operationalize these goals?	What can individual Committee members do to help make this happen?
2	Goal 1. Connect research to policy: focus research priorities on policy-relevant actions	1. Separate near-term and long-term objectives 2. Pick papers to share at TRB that more policy-relevant 3. Poster sessions where more technical info can be shared 4. Workshops and seminars designed to bring communities , CBOs, researchers, policy makers together 5. Invite "lived experts" to our meetings (e.g., from EJ communities) (second this idea) 6. EPA Research Plans next 4 years: https://www.epa.gov/research/strategic-research-action-plans-fiscal-years-2023-2026-drafts	1. Use existing research such as NCHRP 25-56 on where state DOTs are at to identify research needs
3	Subgoal a. Identify policy community needs, share science-based priorities with practitioners	1. Define community or design a way to identify community needs. 2. Identify, summarize, compare frameworks for outreach and engagement with communities - how are community priorities assessed? Perhaps could connect to e-circular	Capacity Building - Sharing resources
4	Subgoal b. Develop findings to inform GHG control efforts in the near-term (two to five years)	1. Develop information on strategies to specifically high-mileage drivers, considering equity implications, and benefits/cost-effectiveness vs. general strategies 2. Develop/update information on GHG mitigation strategy effectiveness, cost-effectiveness, and co-benefits 3. Develop consensus on how to include/consider related	1. California has policy and research experience that might be shared 2. Suggest FHWA fund task to provide updated information on GHG cost-effectiveness

+ Connect Research to Policy Profile GHG Mitigation Efforts Improve Info-Sharing Diversify Committee

Notes of appreciation for committee work:



- With our reorganization, two people rotated off the leadership team: **Karin Landsberg** and **Ann Xu**
- Many thanks to both for their service, creativity, and positive contributions to our leadership team's work!

Thanks for your energy and ideas...



... and thanks again to our organizers!

Information sharing...

Freight & Environment: Ports of Entry
September 29-30, 2022 • Oakland, CA

Location Registration Technical Program Sponsor Opportunities Author Resources

Upcoming: 29-30 September 2022. Agenda and registration info at link below:

<https://www.awma.org/ports>



"It runs on helium."